



the **play inspection** company
the safest hands around playgrounds

Annual Inspection

Frodsham Town Council

Churchfields

WA6 6RE



Unit 5 Glenmore Business Park, Blackhill Road, Poole, Dorset, BH16 6NL
t - 01202 590675 f - 0870 428 3942 e - info@playinspections.co.uk

www.playinspections.co.uk

Powered by:

**the play ►
inspection app**
by the play inspection company

Risk Assessment Matrix

Probability>>	5	Very High	VL	L	M	H	VH
	4	High	VL	L	M	H	H
	3	Moderate	VL	L	L	M	M
	2	Low	VL	L	L	L	L
	1	Very Low	VL	VL	VL	VL	VL
			Very Low	Low	Moderate	High	Very High
			1	2	3	4	5

Severity>>

Probability Score	Probability of Occurrence
1 – Very Low	No significant probability; lightning Strike
2 – Low	Minimal probability of occurrence. Requires significant factor or combination of factors to take place. Significant increase in intensity of use.
3 – Moderate	Moderate probability. An added factor is needed to cause an accident. Designed use is unlikely to be problematic, additional factor is required. Covers or guards loose, removed or vandalised. Absent guard rail or barrier at high levels
4 – High	High probability. Accident is probable without any added factor. Glass contaminant in loose fill surface. Exposed sharp edges on equipment.
5 – Very High	Very High probability. If the situation is not addressed an accident is almost certain. Severely worn chains/shackles. Severely damaged surfacing within impact area

Severity Score	Severity of injury
1 – Very Low	No injury likely e.g. damaged or soiled clothing, minor bruising
2 – Low	Minor injury – Laceration or bruising requiring first aid only
3 – Moderate	Injury requiring medical intervention e.g. laceration requiring stitches, sprain, fracture of small bones of hand or foot.
4 – High	Serious injury including hospitalisation for observation e.g. concussion, fracture of long bones of leg/arm, back/neck injuries, fractured skull.
5 – Very High	Severe injury involving the potential for permanent disability e.g. amputation, loss of sight, spinal injury, fatality.

NB: When we inspect we only see a snapshot of the current condition of the equipment. It is the operator's responsibility to ensure that there is a continuing level of maintenance to keep the equipment in good working order and the site fit for use.

BS EN 1176:2008 Parts 1-11 (Playground equipment and surfacing)
BS EN 14974 (Facilities for users of roller sports equipment)
BS EN 15312 (Free access multi-sports equipment)
BS 10075 (Specification for Parkour Equipment)

Site Information

Inspection Ref: 613981

Site Ref: 40453

Customer Order No: None

Annual Inspection - 02 July 2018 at 12:43 Inspector: Matt Hall RPII Annual Inspector (Outdoor)

Risk Assessment: **8 - Low Risk**



Location: The site is partially overlooked by properties in the local community

Disabled Access: Generally accessible; an area accessible to most but not all people even when help is at hand.



6 - Low Risk

Item: Ancillary Items - Entrance Feature
Manufacturer: Owner/Operator
Surface Type: All Weather Surface
Equipment Compliance: N/A
Surface Area Compliance: N/A
Ref/Part Number:
Total Findings: 1



Finding 1

There is slight damage to the feature - Monitor for any further deterioration and repair as required



4 - Very Low Risk

Item: Ancillary Items - Gate - Maintenance
Manufacturer: Owner/Operator
Surface Type: N/A
Equipment Compliance: N/A
Surface Area Compliance: N/A
Ref/Part Number:
Total Findings: 1



Finding 1

This item is satisfactory - no work required



4 - Very Low Risk

Item: Ancillary Items - Sign
Manufacturer: Owner/Operator
Surface Type: N/A
Equipment Compliance: N/A
Surface Area Compliance: N/A
Ref/Part Number:
Total Findings: 1



Finding 1

This item is satisfactory - no work required



4 - Very Low Risk

Item: Ancillary Items - Litter Bin
Manufacturer: Owner/Operator
Surface Type: N/A
Equipment Compliance: N/A
Surface Area Compliance: N/A
Ref/Part Number:
Total Findings: 1



Finding 1

This item is satisfactory - no work required



6 - Low Risk

Item: Ancillary Items - Bench
Manufacturer: Not Identified
Surface Type: All Weather Surface
Equipment Compliance: N/A
Surface Area Compliance: N/A
Ref/Part Number:
Total Findings: 1



Finding 1

The ground fixings are slightly loose - Secure fixings



6 - Low Risk

Item: Ancillary Items - Picnic Table
Manufacturer: Not Identified
Surface Type: All Weather Surface
Equipment Compliance: N/A
Surface Area Compliance: N/A
Ref/Part Number:
Total Findings: 1



Finding 1

There are projecting bolt thread(s) present - Remove excess thread length and deburr or provide cap



6 - Low Risk

Item: Rotor Play - Supanova
Manufacturer: Kompan Ltd
Surface Type: Tigermulch
Equipment Compliance: Yes
Surface Area Compliance: Yes
Ref/Part Number:
Total Findings: 2



Finding 1

The wet pour is crumbling in areas - Monitor for any further deterioration and repair as required

Finding 2

There is some graffiti present - Remove the graffiti



6 - Low Risk

Item: Swings - Pendulum Swing
Manufacturer: Playdale Playgrounds Ltd
Surface Type: Tigermulch
Equipment Compliance: Yes
Surface Area Compliance: Yes
Ref/Part Number:
Total Findings: 3



Finding 1

The wet pour is crumbling in areas - Monitor for any further deterioration and repair as required

Finding 2

There is some notable evidence of chain wear - Monitor for any further deterioration and replace when 40% worn

Finding 3

The fixings for this item were in excess of 2.5m above the standing surface and could not be fully accessed by the inspector, a maintenance inspection should be undertaken to assess wear and tear of the components - Implement a maintenance inspection for this item



8 - Low Risk

Item: Rocking Equipment - See Saw
Manufacturer: Spiel Art
Surface Type: Tigermulch
Equipment Compliance: Yes
Surface Area Compliance: Yes
Ref/Part Number:
Total Findings: 3



Finding 1

The wet pour is crumbling in areas - Monitor for any further deterioration and repair as required

Finding 2

There are gaps opening between the surfacing and the edging surround or between the joints in the surfacing - Monitor for any further deterioration and repair as required

Finding 3

There are trip hazards at the edges of the surface - Reinstate surrounding surface levels to remove the trip points



6 - Low Risk

Item: Swings - 2 Bay (2 Flat, 2 Cradle)
Manufacturer: Playdale Playgrounds Ltd
Surface Type: Tigermulch
Equipment Compliance: Yes
Surface Area Compliance: Yes
Ref/Part Number:
Total Findings: 3



Finding 1

There are gaps opening between the surfacing and the edging surround or between the joints in the surfacing - Monitor for any further deterioration and repair as required

Finding 2

The wet pour is crumbling in areas - Monitor for any further deterioration and repair as required

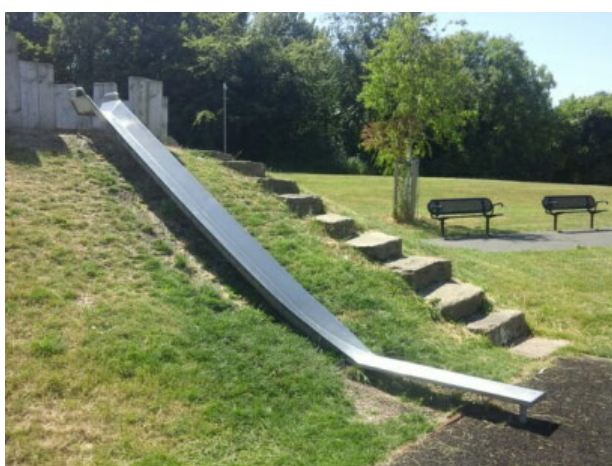
Finding 3

The seat has minor damage or wear - Monitor for any further deterioration and replace as required



8 - Low Risk

Item: Other - Embankment Slide
Manufacturer: Not Identified
Surface Type: Grass Matrix Tiles
Equipment Compliance: No
Surface Area Compliance: Yes
Ref/Part Number:
Total Findings: 2



Finding 1

There are trip hazards at the edges of the surface - Reinststate surrounding surface levels to remove the trip points

Finding 2

The timber edge forms a hard object within the falling space of the equipment in contravention of the requirements of BS EN 1176 Part 1 - Monitor use



5 - Very Low Risk

Item: Ancillary Items - Steps
Manufacturer: Owner/Operator
Surface Type: All Weather Surface
Equipment Compliance: N/A
Surface Area Compliance: N/A
Ref/Part Number:
Total Findings: 1



Finding 1

The use of boulders in the play area presents a risk to users of falling onto hard objects - Monitor use



8 - Low Risk

Item: Other - Embankment Slide
Manufacturer: Playdale Playgrounds Ltd
Surface Type: Tiger mulch
Equipment Compliance: No
Surface Area Compliance: Yes
Ref/Part Number:
Total Findings: 4



Finding 1

The timber edge forms a hard object within the falling space of the equipment in contravention of the requirements of BS EN 1176 Part 1 - Monitor use

Finding 2

There are gaps opening between the surfacing and the edging surround or between the joints in the surfacing - Monitor for any further deterioration and repair as required

Finding 3

There are trip hazards at the edges of the surface - Reinstate surrounding surface levels to remove the trip points

Finding 4

There is/are finger entrapment/s in the slide start and the item fails to meet the requirements of BS EN 1176:2008 Part 1 4.2.7.6 Entrapment of fingers - Monitor use



4 - Very Low Risk

Item: Activity Equipment - Crawling Tunnel
Manufacturer: Playdale Playgrounds Ltd
Surface Type: Tigermulch
Equipment Compliance: N/A
Surface Area Compliance: N/A
Ref/Part Number:
Total Findings: 1



Finding 1

The tunnel has been blanked off - Reinstate as required



8 - Low Risk

Item: Activity Equipment - Bridge
Manufacturer: Playdale Playgrounds Ltd
Surface Type: All Weather Surface
Equipment Compliance: N/A
Surface Area Compliance: N/A
Ref/Part Number:
Total Findings: 2



Finding 1

The surfacing around the item is damaged and is creating a potential trip hazard - Repair the damaged areas of surfacing

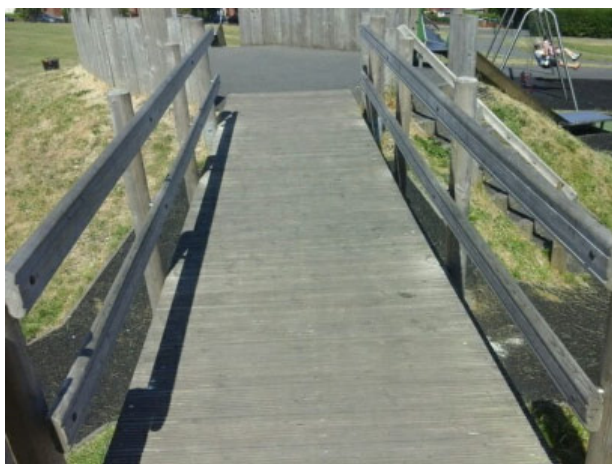
Finding 2

There is offensive graffiti present - Remove as soon as practicable



6 - Low Risk

Item: Ancillary Items - Landscape Feature
Manufacturer: Owner/Operator
Surface Type: N/A
Equipment Compliance: N/A
Surface Area Compliance: N/A
Ref/Part Number:
Total Findings: 1



Finding 1

The timber has a number of air cracks apparent, the splits will have penetrated the preservative applied to the timber and allow water ingress to the unprotected areas - Monitor for any deterioration (rot) and replace as required



8 - Low Risk

Item: Swings - 2 Bay 2 Cradle Swing
Manufacturer: Wicksteed Playgrounds
Surface Type: Bark Mulch
Equipment Compliance: No
Surface Area Compliance: Yes
Ref/Part Number:
Total Findings: 11



Finding 1

The loose fill safety surfacing has become compacted and degraded to mulch - Rake and fork over to aerate the surface

Finding 2

There are weeds/vegetation growth between or around the edges of the surfacing - Remove weeds/vegetation growth

Finding 3

There are trip hazards at the edges of the surface - Reinstate surrounding surface levels to remove the trip points

Finding 4

The edging timbers are damaged - Repair

Finding 5

There are excessive chain tails - Cut back excessive chain links (two links through the quick link connector are recommended)

Finding 6

The bushes are worn or missing - Replace worn or missing bushes

Finding 7

The safety surface is low and the membrane is exposed creating trip points - Remove or resecure the exposed membrane and top up the surface to the correct level

Finding 8

The level of loose fill surfacing has fallen significantly below the minimum 200mm recommended by BS EN 1176 Part 1 - Top up loose fill surfacing to recommended levels.

Finding 9

The seats are too close to the frame as defined in BS EN 1176 Part 2; this is a low risk failure and no remedial action is required - Monitor use

Finding 10

The seats are too close to each other as defined in BS EN 1176 Part 2; this is a low risk failure and no remedial action is required - Monitor use

Findings continued for Swings - 2 Bay 2 Cradle Swing

Finding 11

The seat(s) and suspension were missing at the time of inspection and the inspector was unable to make a full compliance assessment - Replace missing seat(s) and suspension



8 - Low Risk

Item: Rocking Equipment - Spring Bike
Manufacturer: Owner/Operator
Surface Type: Bark Mulch
Equipment Compliance: No
Surface Area Compliance: Yes
Ref/Part Number:
Total Findings: 9



Finding 1

The loose fill safety surfacing has become compacted and degraded to mulch - Rake and fork over to aerate the surface

Finding 2

The safety surface is low and the membrane is exposed creating trip points - Remove or resecure the exposed membrane and top up the surface to the correct level

Finding 3

The level of loose fill surfacing has fallen significantly below the minimum 200mm recommended by BS EN 1176 Part 1 - Top up loose fill surfacing to recommended levels.

Finding 4

The end of handgrips and/or footrests have a cross section of less than 15cm² and fail to meet the requirements of BS EN 1176 Part 6 - This is a relatively low risk failure and no remedial action is recommended

Finding 5

There is some evidence of rot in the timber - Monitor for any further deterioration and replace as required

Finding 6

Parts of the timber are rough or splintered - Remove all rough or sharp edges

Finding 7

The item is slightly loose in its foundations - Monitor for any further deterioration and repair as required

Finding 8

There is/are bolt cap covers missing or damaged on the item - Replace missing or damaged bolt cap covers

Finding 9

The seat is loose - Re secure seat



8 - Low Risk

Item: Rocking Equipment - Spring Tractor
Manufacturer: Owner/Operator
Surface Type: Bark Mulch
Equipment Compliance: No
Surface Area Compliance: Yes
Ref/Part Number:
Total Findings: 9



Finding 1

The loose fill safety surfacing has become compacted and degraded to mulch - Rake and fork over to aerate the surface

Finding 2

The safety surface is low and the membrane is exposed creating trip points - Remove or resecure the exposed membrane and top up the surface to the correct level

Finding 3

The level of loose fill surfacing has fallen significantly below the minimum 200mm recommended by BS EN 1176 Part 1 - Top up loose fill surfacing to recommended levels.

Finding 4

There is/are bolt cap covers missing or damaged on the item - Replace missing or damaged bolt cap covers

Finding 5

There is some evidence of rot in the timber - Monitor for any further deterioration and replace as required

Finding 6

The item is slightly loose in its foundations - Monitor for any further deterioration and repair as required

Finding 7

The item has missing component(s) - Consider replacing missing components

Finding 8

The end of handgrips and/or footrests have a cross section of less than 15cm² and fail to meet the requirements of BS EN 1176 Part 6 - This is a relatively low risk failure and no remedial action is recommended

Finding 9

The plywood has delaminated in some places - Remove all rough or splintered edges.



6 - Low Risk

Item: Multi Use Games Area - Goal End
Manufacturer: Owner/Operator
Surface Type: Grass
Equipment Compliance: N/A
Surface Area Compliance: N/A
Ref/Part Number:
Total Findings: 2






Finding 1




The surface has eroded in some areas - Reinststate the surface

Finding 2

The paintwork on this item has been damaged or worn exposing the metal underneath which is rusting - Treat any rusting components and repaint

Findings Information

 6 - Low Risk (Finding 1)			
Item:	Ancillary Items - Entrance Feature	Risk Level:	L - Low Risk
Manufacturer:	Owner/Operator	Surface:	All Weather Surface
			
Finding:	There is slight damage to the feature		Action: Monitor for any further deterioration and repair as required

 6 - Low Risk (Finding 1)			
Item:	Ancillary Items - Bench	Risk Level:	L - Low Risk
Manufacturer:	Not Identified	Surface:	All Weather Surface
			
Finding:	The ground fixings are slightly loose		Action: Secure fixings



6 - Low Risk (Finding 1)

Item: Ancillary Items - Picnic Table
Manufacturer: Not Identified

Risk Level: L - Low Risk
Surface: All Weather Surface



Finding: There are projecting bolt thread(s) present

Action: Remove excess thread length and deburr or provide cap



6 - Low Risk (Finding 1)

Item: Rotor Play - Supanova
Manufacturer: Kompan Ltd

Risk Level: L - Low Risk
Surface: Tigermulch



Finding: The wet pour is crumbling in areas

Action: Monitor for any further deterioration and repair as required



2 - Very Low Risk (Finding 2)

Item: Rotor Play - Supanova
Manufacturer: Kompan Ltd

Risk Level: V - Very Low Risk
Surface: Tigermulch



Finding: There is some graffiti present

Action: Remove the graffiti



6 - Low Risk (Finding 1)

Item: Swings - Pendulum Swing
Manufacturer: Playdale Playgrounds Ltd

Risk Level: L - Low Risk
Surface: Tigermulch



Finding: The wet pour is crumbling in areas

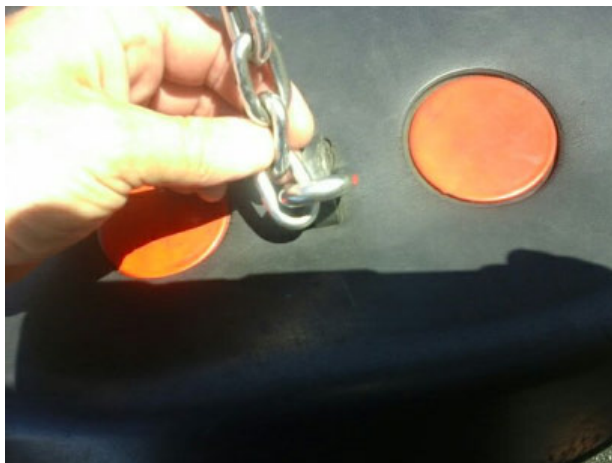
Action: Monitor for any further deterioration and repair as required



6 - Low Risk (Finding 2)

Item: Swings - Pendulum Swing
Manufacturer: Playdale Playgrounds Ltd

Risk Level: L - Low Risk
Surface: Tigermulch



Finding: There is some notable evidence of chain wear

Action: Monitor for any further deterioration and replace when 40% worn



0 - Risk Assessment not Undertaken (Finding 3)

Item: Swings - Pendulum Swing
Manufacturer: Playdale Playgrounds Ltd

Risk Level: N - Risk Assessment not Undertaken
Surface: Tigermulch



Finding: The fixings for this item were in excess of 2.5m above the standing surface and could not be fully accessed by the inspector, a maintenance inspection should be undertaken to assess wear and tear of the components

Action: Implement a maintenance inspection for this item



6 - Low Risk (Finding 1)

Item: Rocking Equipment - See Saw
Manufacturer: Spiel Art

Risk Level: L - Low Risk
Surface: Tigermulch



Finding: The wet pour is crumbling in areas

Action: Monitor for any further deterioration and repair as required



6 - Low Risk (Finding 2)

Item: Rocking Equipment - See Saw
Manufacturer: Spiel Art

Risk Level: L - Low Risk
Surface: Tigermulch



Finding: There are gaps opening between the surfacing and the edging surround or between the joints in the surfacing

Action: Monitor for any further deterioration and repair as required



8 - Low Risk (Finding 3)

Item: Rocking Equipment - See Saw
Manufacturer: Spiel Art

Risk Level: L - Low Risk
Surface: Tigermulch



Finding: There are trip hazards at the edges of the surface

Action: Reinstate surrounding surface levels to remove the trip points



6 - Low Risk (Finding 1)

Item: Swings - 2 Bay (2 Flat, 2 Cradle)
Manufacturer: Playdale Playgrounds Ltd

Risk Level: L - Low Risk
Surface: Tigermulch



Finding: There are gaps opening between the surfacing and the edging surround or between the joints in the surfacing

Action: Monitor for any further deterioration and repair as required



6 - Low Risk (Finding 2)

Item: Swings - 2 Bay (2 Flat, 2 Cradle)
Manufacturer: Playdale Playgrounds Ltd

Risk Level: L - Low Risk
Surface: Tigermulch



Finding: The wet pour is crumbing in areas

Action: Monitor for any further deterioration and repair as required



6 - Low Risk (Finding 3)

Item: Swings - 2 Bay (2 Flat, 2 Cradle)
Manufacturer: Playdale Playgrounds Ltd

Risk Level: L - Low Risk
Surface: Tigermulch



Finding: The seat has minor damage or wear

Action: Monitor for any further deterioration and replace as required



8 - Low Risk (Finding 1)

Item: Other - Embankment Slide
Manufacturer: Not Identified

Risk Level: L - Low Risk
Surface: Grass Matrix Tiles



Finding: There are trip hazards at the edges of the surface

Action: Reinstate surrounding surface levels to remove the trip points



8 - Low Risk (Finding 2)

Item: Other - Embankment Slide
Manufacturer: Not Identified

Risk Level: L - Low Risk
Surface: Grass Matrix Tiles



Finding: The timber edge forms a hard object within the falling space of the equipment in contravention of the requirements of BS EN 1176 Part 1

Action: Monitor use



5 - Very Low Risk (Finding 1)

Item: Ancillary Items - Steps
Manufacturer: Owner/Operator

Risk Level: V - Very Low Risk
Surface: All Weather Surface



Finding: The use of boulders in the play area presents a risk to users of falling onto hard objects
Action: Monitor use



8 - Low Risk (Finding 1)

Item: Other - Embankment Slide
Manufacturer: Playdale Playgrounds Ltd

Risk Level: L - Low Risk
Surface: Tigermulch



Finding: The timber edge forms a hard object within the falling space of the equipment in contravention of the requirements of BS EN 1176 Part 1
Action: Monitor use



6 - Low Risk (Finding 2)

Item: Other - Embankment Slide
Manufacturer: Playdale Playgrounds Ltd

Risk Level: L - Low Risk
Surface: Tigermulch



Finding: There are gaps opening between the surfacing and the edging surround or between the joints in the surfacing

Action: Monitor for any further deterioration and repair as required



8 - Low Risk (Finding 3)

Item: Other - Embankment Slide
Manufacturer: Playdale Playgrounds Ltd

Risk Level: L - Low Risk
Surface: Tigermulch



Finding: There are trip hazards at the edges of the surface

Action: Reinstate surrounding surface levels to remove the trip points



5 - Very Low Risk (Finding 4)

Item: Other - Embankment Slide
Manufacturer: Playdale Playgrounds Ltd

Risk Level: V - Very Low Risk
Surface: Tigermulch



Finding: There is/are finger entrapment/s in the slide start and the item fails to meet the requirements of BS EN 1176:2008 Part 1 4.2.7.6 Entrapment of fingers

Action: Monitor use



4 - Very Low Risk (Finding 1)

Item: Activity Equipment - Crawling Tunnel
Manufacturer: Playdale Playgrounds Ltd

Risk Level: V - Very Low Risk
Surface: Tigermulch



Finding: The tunnel has been blanked off

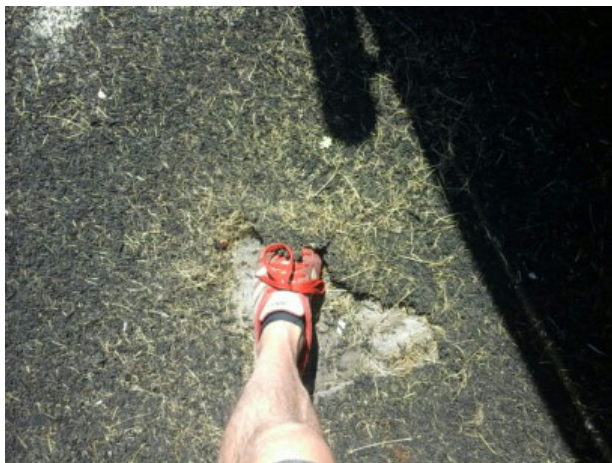
Action: Reinstate as required



8 - Low Risk (Finding 1)

Item: Activity Equipment - Bridge
Manufacturer: Playdale Playgrounds Ltd

Risk Level: L - Low Risk
Surface: All Weather Surface



Finding: The surfacing around the item is damaged and is creating a potential trip hazard

Action: Repair the damaged areas of surfacing



2 - Very Low Risk (Finding 2)

Item: Activity Equipment - Bridge
Manufacturer: Playdale Playgrounds Ltd

Risk Level: V - Very Low Risk
Surface: All Weather Surface



Finding: There is offensive graffiti present

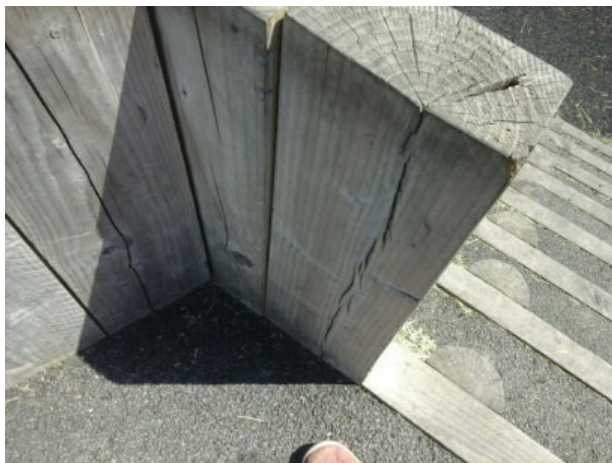
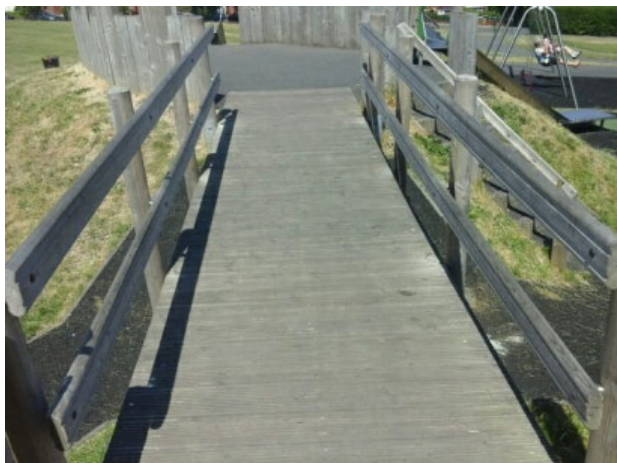
Action: Remove as soon as practicable



6 - Low Risk (Finding 1)

Item: Ancillary Items - Landscape Feature
Manufacturer: Owner/Operator

Risk Level: L - Low Risk
Surface: N/A



Finding: The timber has a number of air cracks apparent, the splits will have penetrated the preservative applied to the timber and allow water ingress to the unprotected areas

Action: Monitor for any deterioration (rot) and replace as required



6 - Low Risk (Finding 1)

Item: Swings - 2 Bay 2 Cradle Swing
Manufacturer: Wicksteed Playgrounds

Risk Level: L - Low Risk
Surface: Bark Mulch



Finding: The loose fill safety surfacing has become compacted and degraded to mulch

Action: Rake and fork over to aerate the surface



6 - Low Risk (Finding 2)

Item: Swings - 2 Bay 2 Cradle Swing
Manufacturer: Wicksteed Playgrounds

Risk Level: L - Low Risk
Surface: Bark Mulch



Finding: There are weeds/vegetation growth between or around the edges of the surfacing

Action: Remove weeds/vegetation growth



8 - Low Risk (Finding 3)

Item: Swings - 2 Bay 2 Cradle Swing
Manufacturer: Wicksteed Playgrounds

Risk Level: L - Low Risk
Surface: Bark Mulch



Finding: There are trip hazards at the edges of the surface

Action: Reinstate surrounding surface levels to remove the trip points



6 - Low Risk (Finding 4)

Item: Swings - 2 Bay 2 Cradle Swing
Manufacturer: Wicksteed Playgrounds

Risk Level: L - Low Risk
Surface: Bark Mulch



Finding: The edging timbers are damaged

Action: Repair



6 - Low Risk (Finding 5)

Item: Swings - 2 Bay 2 Cradle Swing
Manufacturer: Wicksteed Playgrounds

Risk Level: L - Low Risk
Surface: Bark Mulch



Finding: There are excessive chain tails

Action: Cut back excessive chain links (two links through the quick link connector are recommended)



8 - Low Risk (Finding 6)

Item: Swings - 2 Bay 2 Cradle Swing
Manufacturer: Wicksteed Playgrounds

Risk Level: L - Low Risk
Surface: Bark Mulch



Finding: The bushes are worn or missing

Action: Replace worn or missing bushes



8 - Low Risk (Finding 7)

Item: Swings - 2 Bay 2 Cradle Swing
Manufacturer: Wicksteed Playgrounds

Risk Level: L - Low Risk
Surface: Bark Mulch



Finding: The safety surface is low and the membrane is exposed creating trip points

Action: Remove or resecure the exposed membrane and top up the surface to the correct level



8 - Low Risk (Finding 8)

Item: Swings - 2 Bay 2 Cradle Swing
Manufacturer: Wicksteed Playgrounds

Risk Level: L - Low Risk
Surface: Bark Mulch



Finding: The level of loose fill surfacing has fallen significantly below the minimum 200mm recommended by BS EN 1176 Part 1

Action: Top up loose fill surfacing to recommended levels.



4 - Very Low Risk (Finding 9)

Item: Swings - 2 Bay 2 Cradle Swing
Manufacturer: Wicksteed Playgrounds

Risk Level: V - Very Low Risk
Surface: Bark Mulch



Finding: The seats are too close to the frame as defined in BS EN 1176 Part 2; this is a low risk failure and no remedial action is required

Action: Monitor use



4 - Very Low Risk (Finding 10)

Item: Swings - 2 Bay 2 Cradle Swing
Manufacturer: Wicksteed Playgrounds

Risk Level: V - Very Low Risk
Surface: Bark Mulch



Finding: The seats are too close to each other as defined in BS EN 1176 Part 2; this is a low risk failure and no remedial action is required

Action: Monitor use



4 - Very Low Risk (Finding 11)

Item: Swings - 2 Bay 2 Cradle Swing
Manufacturer: Wicksteed Playgrounds

Risk Level: V - Very Low Risk
Surface: Bark Mulch



Finding: The seat(s) and suspension were missing at the time of inspection and the inspector was unable to make a full compliance assessment

Action: Replace missing seat(s) and suspension



6 - Low Risk (Finding 1)

Item: Rocking Equipment - Spring Bike
Manufacturer: Owner/Operator

Risk Level: L - Low Risk
Surface: Bark Mulch



Finding: The loose fill safety surfacing has become compacted and degraded to mulch

Action: Rake and fork over to aerate the surface



8 - Low Risk (Finding 2)

Item: Rocking Equipment - Spring Bike
Manufacturer: Owner/Operator

Risk Level: L - Low Risk
Surface: Bark Mulch



Finding: The safety surface is low and the membrane is exposed creating trip points

Action: Remove or resecure the exposed membrane and top up the surface to the correct level



8 - Low Risk (Finding 3)

Item: Rocking Equipment - Spring Bike
Manufacturer: Owner/Operator

Risk Level: L - Low Risk
Surface: Bark Mulch



Finding: The level of loose fill surfacing has fallen significantly below the minimum 200mm recommended by BS EN 1176 Part 1

Action: Top up loose fill surfacing to recommended levels.



4 - Very Low Risk (Finding 4)

Item: Rocking Equipment - Spring Bike
Manufacturer: Owner/Operator

Risk Level: V - Very Low Risk
Surface: Bark Mulch



Finding: The end of handgrips and/or footrests have a cross section of less than 15cm² and fail to meet the requirements of BS EN 1176 Part 6

Action: This is a relatively low risk failure and no remedial action is recommended



6 - Low Risk (Finding 5)

Item: Rocking Equipment - Spring Bike
Manufacturer: Owner/Operator

Risk Level: L - Low Risk
Surface: Bark Mulch



Finding: There is some evidence of rot in the timber

Action: Monitor for any further deterioration and replace as required



6 - Low Risk (Finding 6)

Item: Rocking Equipment - Spring Bike
Manufacturer: Owner/Operator

Risk Level: L - Low Risk
Surface: Bark Mulch



Finding: Parts of the timber are rough or splintered

Action: Remove all rough or sharp edges



6 - Low Risk (Finding 7)

Item: Rocking Equipment - Spring Bike
Manufacturer: Owner/Operator

Risk Level: L - Low Risk
Surface: Bark Mulch



Finding: The item is slightly loose in its foundations

Action: Monitor for any further deterioration and repair as required



6 - Low Risk (Finding 8)

Item: Rocking Equipment - Spring Bike
Manufacturer: Owner/Operator

Risk Level: L - Low Risk
Surface: Bark Mulch



Finding: There is/are bolt cap covers missing or damaged on the item

Action: Replace missing or damaged bolt cap covers



6 - Low Risk (Finding 9)

Item: Rocking Equipment - Spring Bike
Manufacturer: Owner/Operator

Risk Level: L - Low Risk
Surface: Bark Mulch



Finding: The seat is loose

Action: Re secure seat



6 - Low Risk (Finding 1)

Item: Rocking Equipment - Spring Tractor
Manufacturer: Owner/Operator

Risk Level: L - Low Risk
Surface: Bark Mulch



Finding: The loose fill safety surfacing has become compacted and degraded to mulch

Action: Rake and fork over to aerate the surface



8 - Low Risk (Finding 2)

Item: Rocking Equipment - Spring Tractor
Manufacturer: Owner/Operator

Risk Level: L - Low Risk
Surface: Bark Mulch



Finding: The safety surface is low and the membrane is exposed creating trip points

Action: Remove or resecure the exposed membrane and top up the surface to the correct level



8 - Low Risk (Finding 3)

Item: Rocking Equipment - Spring Tractor
Manufacturer: Owner/Operator

Risk Level: L - Low Risk
Surface: Bark Mulch



Finding: The level of loose fill surfacing has fallen significantly below the minimum 200mm recommended by BS EN 1176 Part 1

Action: Top up loose fill surfacing to recommended levels.



6 - Low Risk (Finding 4)

Item: Rocking Equipment - Spring Tractor
Manufacturer: Owner/Operator

Risk Level: L - Low Risk
Surface: Bark Mulch



Finding: There is/are bolt cap covers missing or damaged on the item

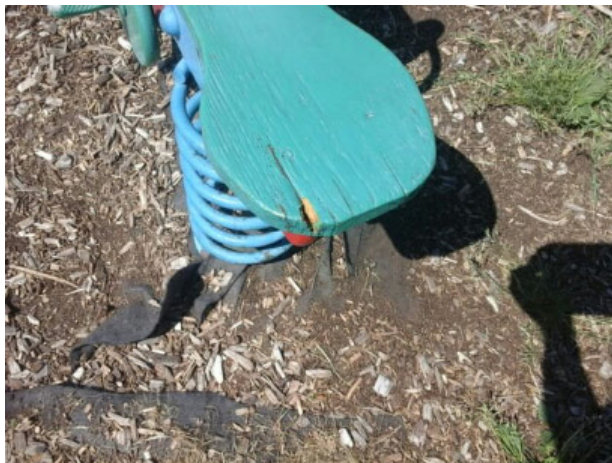
Action: Replace missing or damaged bolt cap covers



6 - Low Risk (Finding 5)

Item: Rocking Equipment - Spring Tractor
Manufacturer: Owner/Operator

Risk Level: L - Low Risk
Surface: Bark Mulch



Finding: There is some evidence of rot in the timber

Action: Monitor for any further deterioration and replace as required



6 - Low Risk (Finding 6)

Item: Rocking Equipment - Spring Tractor
Manufacturer: Owner/Operator

Risk Level: L - Low Risk
Surface: Bark Mulch



Finding: The item is slightly loose in its foundations

Action: Monitor for any further deterioration and repair as required



2 - Very Low Risk (Finding 7)

Item: Rocking Equipment - Spring Tractor
Manufacturer: Owner/Operator

Risk Level: V - Very Low Risk
Surface: Bark Mulch



Finding: The item has missing component(s)

Action: Consider replacing missing components



4 - Very Low Risk (Finding 8)

Item: Rocking Equipment - Spring Tractor
Manufacturer: Owner/Operator

Risk Level: V - Very Low Risk
Surface: Bark Mulch



Finding: The end of handgrips and/or footrests have a cross section of less than 15cm² and fail to meet the requirements of BS EN 1176 Part 6

Action: This is a relatively low risk failure and no remedial action is recommended



6 - Low Risk (Finding 9)

Item: Rocking Equipment - Spring Tractor
Manufacturer: Owner/Operator

Risk Level: L - Low Risk
Surface: Bark Mulch



Finding: The plywood has delaminated in some places

Action: Remove all rough or splintered edges.



6 - Low Risk (Finding 1)

Item: Multi Use Games Area - Goal End
Manufacturer: Owner/Operator

Risk Level: L - Low Risk
Surface: Grass



Finding: The surface has eroded in some areas

Action: Reinstate the surface



6 - Low Risk (Finding 2)

Item: Multi Use Games Area - Goal End
Manufacturer: Owner/Operator

Risk Level: L - Low Risk
Surface: Grass



Finding: The paintwork on this item has been damaged or worn exposing the metal underneath which is rusting

Action: Treat any rusting components and repaint