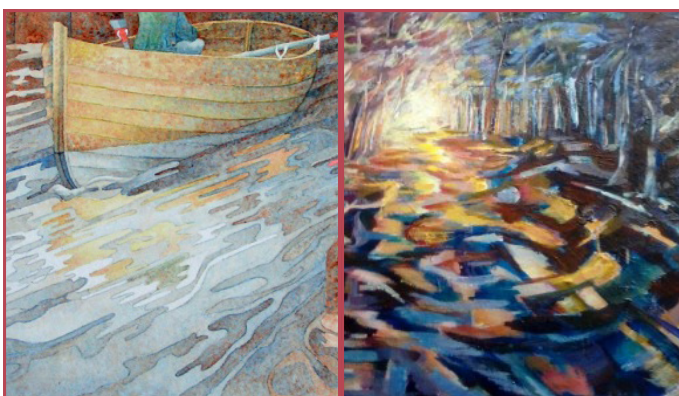


A UNIQUE VENUE
FOR ENGAGING
WITH THE ARTS



New Exhibitions Running from 21st FEB to 26th MAR

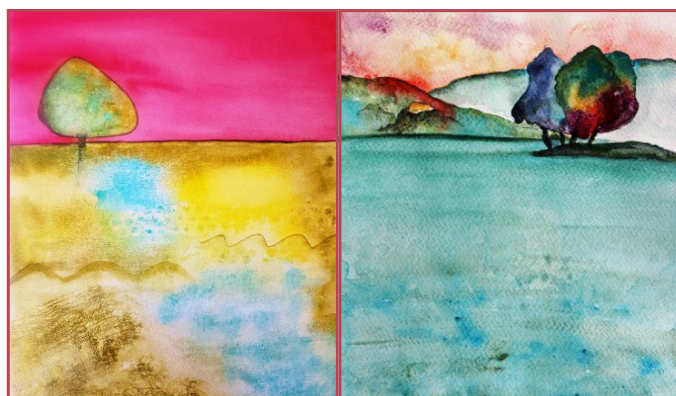
Meet the Artists Open Evening on Friday 23rd February 2018, 7–9pm
FREE ENTRY & REFRESHMENTS - EVERYONE WELCOME



GALLERY 1

The Eddisbury Artists, 'Another Perspective'

A local group of artists who have been established for over 21 years.



GALLERY 2

Brigitte Watkinson

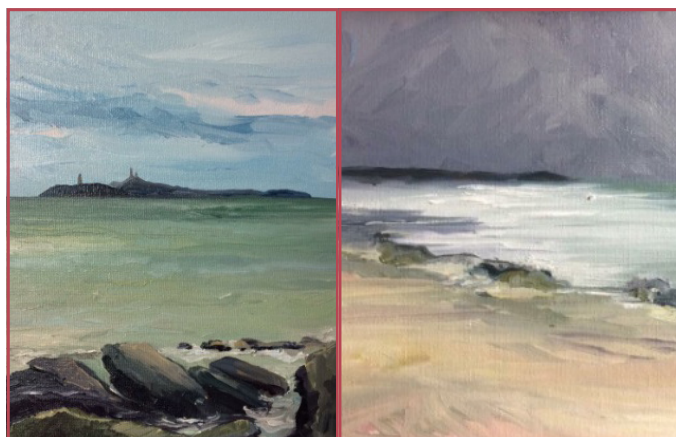
The Secret Life of Trees.



GALLERY 3

David Nolan

Retrospective – Founder of the Eddisbury Artists.



LINK GALLERY

Tracy McKenna, 'Facing West'.

A plein air painting experience of her travels.

Come along and view original artwork and local craft work, which can be purchased or just admired. Our café is also open, where refreshments and light lunches are available.

FREE ENTRY Monday to Saturday 10am - 4pm. Sunday 1pm - 4pm.

Castle Park Art Centre, off Fountain Lane, Frodsham, Cheshire WA6 6SE. 01928 735832

