

Walk and Ride Festival

5 - 13 October 2019 Programme of Events



Guidance and Information

Your safety is our priority. So that the events are safe and enjoyable, we ask you to read and take note of the following guidance.

Booking required

Participants **MUST** pre-book onto each event to determine numbers, to assist Leaders with co-ordination, and for health and safety purposes. Numbers for each event are limited and you are advised to book as soon as possible. Booking is via Eventbrite unless otherwise specified. Please see the 'Walk and Ride Festival' webpage at www.sandstoneridge.org.uk for details and to make your booking. All events correct at time of press but please check website for any changes prior to booking.

Equipment

Please ensure that you are wearing suitable clothing and footwear for all events and weather conditions on the day, and bring sun cream, hat and drinks/snacks as appropriate.

Personal health and safety

For the safety and enjoyment of others, please ensure that you are physically capable of undertaking the event activity. Please make your event Leader aware of any medical conditions that could impact on your participation. Leaders may ask you not to participate if they feel you are unsuitably dressed or are unable to undertake the event safely.

Risk

Whilst risk assessments have been carried out for each activity, please note that **all events are undertaken at your own risk**. You are responsible for any equipment, children and animals in your care. The organisers **will not** accept responsibility for any loss or damage to personal property, or any injury, however caused.

Event advice

Please try to arrive in plenty of time before the event as Leaders will not wait and will set off promptly at the notified time. Some Leaders may wish to brief participants about any issues or conditions before setting off.

Cancellations

Please note that it may be necessary to cancel an event at less than 24 hours' notice due to a low uptake, adverse weather conditions or sudden illness and we will do our best to contact you to advise if that is the case.



Children

Children of all ages are welcome unless otherwise specified on event details. Children must always be accompanied by a parent or carer. For the safety and enjoyment of everyone, parents or carers should ensure that their children can undertake the activity, and that it is appropriate for their age and ability.

Dogs

Well behaved dogs that are calm and safe around other dogs, and families with young children, are also welcome unless specified. Dogs must always be kept on a short lead. Please ensure that you pick up and dispose of any of their dog poo responsibly.

Horse riders

Horse riders must be suitably equipped and wear hi viz gear, meet the conditions of the relevant event Leader and ensure that their horses are safe and behave well in the company of other horses.

Event length

Please note timings are approximate and all finish times will be dependent on the numbers and the speed of the event participants.

Cost

Unless otherwise indicated, all events are provided free of charge. N.B. there may be a cost for parking.

Parking

Please park considerately for the benefit of fellow participants and local residents.

Public transport

Whilst some advice may have been provided, you are responsible for checking any public transport times and locations to ensure that you can get to and from an event within the specified times.

Dropping out

If you wish to drop out of an event at any point, please let the event Leader know before leaving.

Key



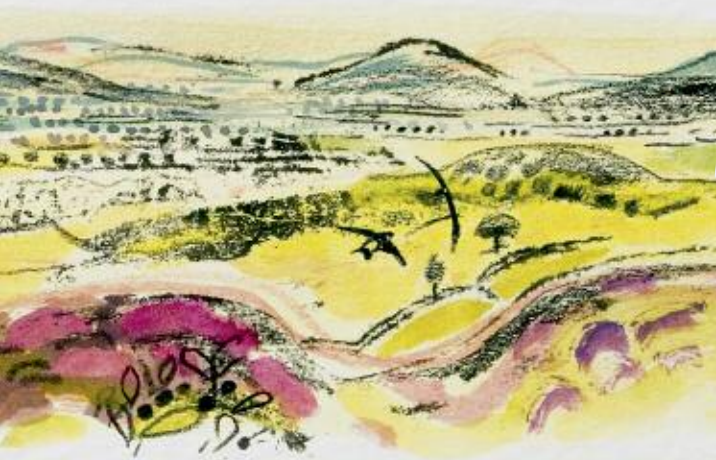
Walk



Horse ride



Cycle



Saturday 5 October



Oakmere Way Circular Ride

Leader: Mid Cheshire Bridleways Association

An attractive circular route incorporating Oakmere Way bridleway, part of Delamere Loop and Delamere Forest. Includes surfaced paths, grass tracks and minor roads with some ups and downs.

N.B. For further details and to book please contact the Mid Cheshire Bridleways Association website www.midcheshirebridleways.co.uk

Late entries may be available on the day.

Distance and grade: 7 miles/gentle

Start: 10.00

Last Rider: 12.00

Location and parking: Ample parking available - £4 for trailers, £5 for horse boxes at Whitefield Car Park, B5152 Station Road, Delamere, Frodsham WA6 8LH.

Grid ref: SJ 558 710



Landscape, features and viewpoints at Foxhill

Leader: Kath Gee, Frodsham and District History Society/Frodsham Festival of Walks

A family-friendly walk through gardens, woodlands and quarry, suitable for children aged 11 years old and over. Some steep paths and uneven steps. Stout footwear required. No dogs please.

Distance and grade: 3 miles/moderate

Start: 14.00

Finish: 16.30

Location and parking: Lower Foxhill Car Park, Tarvin Road, WA6 6XB (two entrances)

Grid ref: SJ 505 754



Sunday 6 October



Bickerton Hill: How geology has shaped the Mid Cheshire Ridge

Leader: Nick Holmes, Sandstone Ridge Trust

Along a scenic three mile walk, using rock outcrops and viewpoints, you will learn how geological processes and more recent human activity, have shaped the mid Cheshire landscape. Warm waterproof clothing and stout footwear recommended. Not suitable for wheelchairs or those with poor walking ability. Sorry, no dogs.

Distance and grade: 3 miles/moderate

Start: 10.00

Finish: 12.30

Location and parking: National Trust free car park, off Goldford Lane, Bickerton SY14 8LN

Grid ref: SJ 503 530



Five mile guided walk around Frodsham Hill

Leader: Iris Keating & Al Nuttall for Sandstone Ridge Trust

Walk along part of the Sandstone Trail and paths at the top of Frodsham Hill. Not suitable for children; some steep cliffs and sheer edges plus steps cut into sandstone. A number of stiles to be negotiated. Well behaved dogs on short leads welcome.

Distance and grade: 5 miles/moderate

Start: 14.00

Finish: 16.30

Location and parking: Far corner of the car park at Mersey View, Best Western Forest Hills Hotel, WA6 6HH

Grid ref: SJ 518 767



Monday 7 October



Slowing the flow: Mill Brook Natural Flood Management Scheme

Leader: Andrew Hull, Tattenhall Wildlife Group and Sandstone Ridge Trust

The walk will look at the flood prevention measures which have been put in place in Tattenhall, where 28 properties in the heart of the village are susceptible to flooding. You will see the work that has been undertaken on the Mill Brook to 'slow the flow' and reduce flood risk. No stiles, uneven ground and gentle slope. Wellingtons essential. No dogs please.

Distance and grade: 2 miles/gentle

Start: 10.00

Finish: 12.30

Location and parking: The Barbour Institute, Tattenhall CH3 9PX. Additional parking available nearby at Barbour Square

Grid ref: SJ 493 583

Public transport: Bus 41 & 41A Chester to Whitchurch



Woodland Wander

Leader: Neil Oxley, The Woodland Trust

A woodland walk of about 3 miles around Woodhouse Hill and Snidley Moor with views of the Mersey Estuary and North Wales. The route includes some steep slopes. Dogs on leads welcome.

Distance and grade: 3 miles/moderate

Start: 14.00

Finish: 16.00

Location and parking: Start/finish at the entrance to Snidley Moor on the farm track past Shepherds Houses, off Manley Road, Near Frodsham. Nearest postcode WA6 6HW. Please park towards the far end of the farm track

Grid ref: SJ 516 755



Tuesday 8 October



A walk around Bulkeley

Leader: Rich Webster, The National Trust

An informative circular walk around Bulkeley to include discussions about the history of this National Trust site, designations, veteran trees, current management, future management aspirations and filming. Dog friendly with some steep parts, particularly at the top of Peckforton Gap.

Distance and grade: 2 miles/moderate

Start: 10.00

Finish: 12.00

Location and parking: Lay-by at the top of Coppermine Lane, SY14 8BY

Grid ref: SJ 521 551



Views from the Ridge - followed by Cream Tea at Gifford Lea

Leader: Terri Hull, Sandstone Ridge Trust

This gentle/moderate walk which offers views from the Ridge, will be followed by Cream Tea (kindly provided by Gifford Lea, our principal sponsor). All walkers welcome but priority will be given to Gifford Lea residents. The walk is easy to moderate, mostly on lanes and gravelled pathways with one long gentle slope. The walk then flattens out with one stile and panoramic views to Jodrell Bank and the Peak District. Suitable clothing and walking boots – no dogs please.

Distance and grade: 2/3 miles/gentle/moderate

Start: 13.30

Finish: 15.30 (then back to Gifford Lea in Tattenhall CH3 9FQ)

Location and parking: Adjacent to Candle Factory Car Park, Burwardsley, CH3 9PF

Grid ref: SJ 521 583







List of Events

- 1 Oakmere Way Circular Ride
- 2 Landscape, features and viewpoints at Foxhill
- 3 Bickerton Hill: How geology has shaped the Mid Cheshire Ridge
- 4 Five mile guided walk around Frodsham Hill
- 5 Slowing the flow: Mill Brook Natural Flood Management Scheme
- 6 Woodland Wander
- 7 A walk around Bulkeley
- 8 Views from the Ridge - followed by Cream Tea at Gifford Lea
- 9 Cycle ride along lanes of the Cheshire Plain and Sandstone Ridge
- 10 Station to station walk along Oakmere Way
- 11 The Old Pale and Eddisbury Hillfort
- 12 Bickerton Walk
- 13 Developing Tattenhall Wildlife Corridor
- 14 Lost mosses of Delamere Forest
- 15 History and landscape of Delamere
- 16 Children and family event - walk with some den building
- 17 Introduction to map reading
- 18 A circular walk around Rawhead
- 19 Castle Views
- 20 Prehistoric life at Beeston Castle

Wednesday 9 October



Cycle ride along lanes of the Cheshire Plain and Sandstone Ridge

Leader: Nick Holmes, Sandstone Ridge Trust

Circular route - easy to moderate pace along quiet Cheshire country lanes past Beeston Castle, Hargrave, Tarvin to Manley. Up and down the wooded flanks of the Ridge from Kelsall, through Willington and Utkinton, before returning to Tiverton. Road or hybrid bikes only, mudguards fitted and suitable clothing.

Distance and grade: 30 miles/moderate

Start: 9.30 for 10.00

Finish: 14.00

Location and parking: Lockgate Café near the railway bridge, Tiverton, A49 just south of Tarporley CW6 9NJ – park at Café

Grid ref: SJ 553 599



Station to station walk along Oakmere Way

Leader: Peter Winn, Sandstone Ridge Trust

Linking Whitegate Way and Delamere Forest, a low-level walk with fine views of Eddisbury - some stiles and steps. Train line crossed at a public crossing. Walk ends at Delamere Station.

Distance and grade: 3.5 miles/moderate

Start: 11.00

Finish: 13.00

Location and parking: Cuddington Station Car Park, Warrington Road, Cuddington, CW8 2UH (limited free parking at station and on road elsewhere)

Grid ref: SJ 602 716

Public transport: Train from Chester arrives at Cuddington at 10.23 and from Manchester Piccadilly at 10.48. Trains from Delamere leave for Manchester at 13.18 and to Chester at 13.53



The Old Pale and Eddisbury Hillfort

Leader: Peter Winn, Sandstone Ridge Trust

New walkers welcome to join us for a continuation of the morning walk. We will visit high points on the Ridge with a steep climb to the hillfort.

Distance and grade: 4 miles/moderate

Start: 14.00

Finish: 16.30

Location and parking: Delamere Station, Station Road, Delamere CW8 2HZ - (Pay and display near the station)

Grid ref: SJ 556 704

Public transport: Train from Manchester Piccadilly to Delamere arrives 13.53 and from Chester at 13.18. Return train to Manchester leaves at 17.18 and to Chester at 16.53

Thursday 10 October



Bickerton Walk

Leader: Philip Neagle, National Trust

A walk through the heathland of Bickerton Hill, looking at management past and future, including its Iron Age origins and Maiden Castle. A reasonable level of fitness is required due to terrain. No dogs please.

Distance and grade: 2.5 miles/moderate

Start: 10.00

Finish: 12.30

Location and parking: Bickerton Hill, Pool Lane; car park off Goldford Lane SY14 8LN

Grid ref: SJ 503 530



Developing the Tattenhall Wildlife Corridor

Leader: Andrew Hull, Tattenhall Wildlife Group and Sandstone Ridge Trust

A gentle walk which will look at the wildlife corridor which has been created in and around Tattenhall, and which will focus on the Mill Brook which flows through the village. Woodland, unimproved grassland, reedbed, ponds, and the Mill Brook. Wellingtons essential. Well behaved dogs on leads please.

Distance and grade: 2.5 miles/gentle

Start: 14.00

Finish: 16.30

Location and parking: The Barbour Institute, Tattenhall CH3 9PX. Additional parking nearby at Barbour Square

Grid ref: SJ 493 583

Public transport: Bus 41 & 41A Chester to Whitchurch



Friday 11 October



Lost mosses of Delamere Forest

Leader: Kevin Feeney, Cheshire Wildlife Trust

Discover the lost mosses of Delamere Forest, their wildlife and environmental value, and what Cheshire Wildlife Trust is doing to restore and protect these valuable habitats. Walking mainly on forestry track but straying onto well walked single track paths. Well behaved dogs welcome on leads.

Distance and grade: 3 miles/moderate

Start: 10.00

Finish: 12.00

Location and parking: Barnsbridge Car Park, Ashton Road, Delamere Forest WA6 6NB

Grid ref: SJ 542 716

Public transport: Train to Delamere Station, then a 20 minute walk



History and landscape of Delamere

Leader: Don Wilson, Sandstone Ridge Trust

This walk will cover a host of things - the Iron Age, remnants of a Roman Road, Medieval times, WWI and WWII, the changing landscape, a scandal and something spooky...! Dog friendly, easy well-defined paths and no stiles but there is one steep climb up to Old Pale Heights with extensive views.

Distance and grade: 3 miles/moderate

Start: 14.00

Finish: 16.00

Location and parking: 5 Old Pale Cottages, Eddisbury Hill, Stoney Lane CW6 0SX.

Limited parking on verge or on lay-by at top of Stoney Lane. (N.B. ignore sat-nav if it wants to take you through gate entrance to Old Pale Heights – **don't** go there)

Grid ref: SJ 554 692

Public transport: Bus 82 Chester to Northwich, get off at Delamere School, then 10 minute walk up Stoney Lane



Saturday 12 October



Children and family event - walk with some den building

Leader: Stella Spratley, Conway Centres

A walk from Burwardsley Outdoor Education Centre to the top of Willow Hill and building some dens, before returning to the Centre for a light lunch (supplied). Option to build dens at bottom of the hill for those less keen on steep steps. Aimed at families with children at primary school (N.B. No unaccompanied children or adults please). Maximum two adults per child.

Distance and grade: Max 1.5 miles/gentle to moderate

Start: 10.00

Finish: 14.00

Location and parking: Burwardsley Outdoor Education Centre, School Lane, Burwardsley CH3 9NX. Limited space only in car park, may have option to use Candle Factory nearby

Grid ref: SJ 516 165



Sunday 13 October



Introduction to map reading

Leader: Matt Axford, Cheshire East Council Countryside Ranger Service

An introductory workshop and guided walk on the use of Ordnance Survey maps. Learn how to read the landscape and to navigate successfully through the countryside. Please bring Ordnance Survey Map 257, Crewe and Nantwich, and a packed lunch with you. Wear suitable clothing and footwear.

Distance and grade: 3 miles/moderate

Start: 10.30

Finish: 14.30

Location and parking: Peckforton Village Room, off Stonehouse Lane, Peckforton CW6 9UH

Grid ref: SJ 538 567



A circular walk around Rawhead

Leader: Ian Marshall, Sandstone Ridge Trust

A walk around the highest part of the Sandstone Ridge, with spectacular panoramic views, rock platforms, cliffs, caves and evidence of copper mining.

Distance and grade: 3 miles/moderate to severe

Start: 10.00

Finish: 12.30

Location and parking: Roadside parking, top of Copper Mine Lane off the A534 Bulkeley. Postcode for sat-nav SY14 8BY

Grid ref: SJ 521 551



Castle Views

Leader: Ellie Morris, Sandstone Ridge Trust

Join us for a fairly leisurely walk beneath the sites of two of the special castles which are located on the Sandstone Ridge, whilst taking in lowland farm terrain and ancient woodland. A bit of everything! Some steep steps in parts. Good footwear required.

Distance and grade: 3.5 miles/moderate

Start: 13.00

Finish: 16.00

Location and parking: Beeston Castle Car Park (Pay and Display), Chapel Lane, Beeston, Cheshire, CW6 9TX

Grid ref: SJ 541 592



Prehistoric life at Beeston Castle

Leader: Katherine Potter, English Heritage

Join us to learn more about Bronze Age Beeston and the exciting Roundhouse Project. You will be guided around the site, followed by a chance to experience what Bronze Age life would have been like through some hands-on activities at the Roundhouse site. Steep terrain – walking boots recommended. Family friendly. Dogs on leads welcome. A donation per person is requested which will go towards funds for future maintenance of the Roundhouse.

Distance and grade: 1 mile/moderate

Start: 13.30

Finish: 15.00

Location and parking: Beeston Castle, (Pay and Display) Chapel Lane, Beeston, Cheshire, CW6 9TX

Grid ref: SJ 541 592



— THE POWER OF — COMMUNITY

Living later life your way. If you think you're 'not ready' for retirement community living, think again.

Inspired Villages offers active and busy lifestyles with all the luxuries you could wish for.

Moving to a unique Inspired Village, like Gifford Lea, could be the best decision you ever make.

**Gifford Lea Retirement Village is proud to support
The Sandstone Ridge Inaugural Walk and Ride Festival**

01829 238 751 | GiffordLea.co.uk

The Grange, Davenport Close, Tattenhall, Cheshire, CH3 9FQ



**RETIREMENT
LIVING OPERATOR
OF THE YEAR**

**HealthInvestor
Awards 2019
WINNER**
Property Investor of the year

Partners and Sponsors

The Festival could not take place without the help and support of our sponsors, partners and volunteers.

- A number of Ward Councillors representing the Sandstone Ridge
- Cheshire East Council Countryside Ranger Service
- Cheshire Wildlife Trust
- Conway Centres
- English Heritage
- Frodsham Festival of Walks/Frodsham and District History Society
- Gifford Lea (principal sponsor)
- Mid Cheshire Bridleways Association
- Successfactory (launch sponsor)
- Tattenhall Wildlife Group
- The National Trust
- The Woodland Trust

The Sandstone Ridge Trust's vision is to secure the long-term future of Cheshire's Sandstone Ridge for the enjoyment and benefit of present and future generations.

Our mission is to:

- **Conserve** the natural beauty, special qualities and natural resources of the Sandstone Ridge
- **Connect** people with nature, heritage and the rural way of life, and
- **Inspire** current and future generations to better understand and look after this magical landscape

Visit: www.sandstoneridge.org.uk

